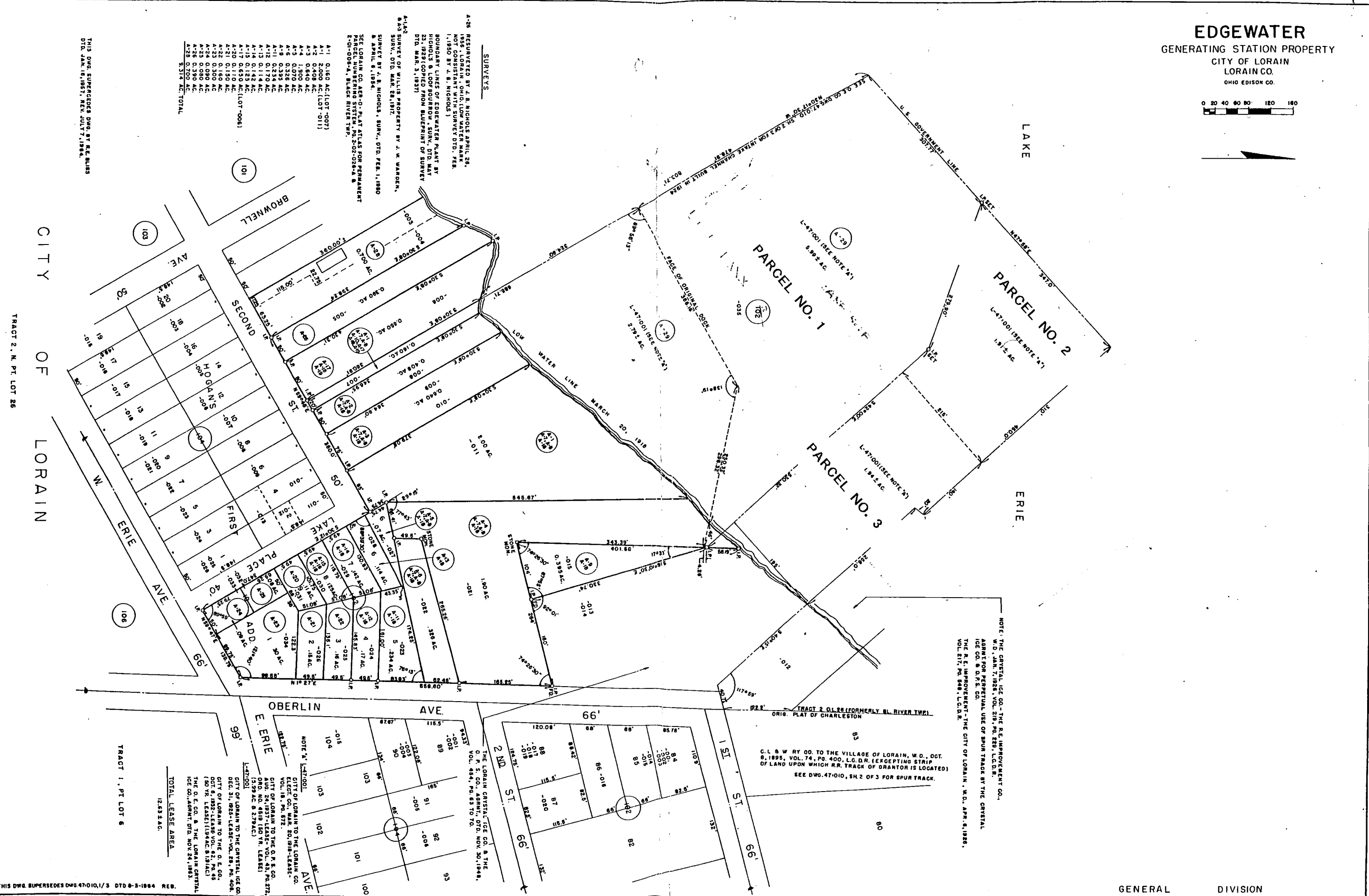
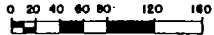


EDGEWATER
GENERATING STATION PROPERTY
CITY OF LORAIN
LORAIN CO.
OHIO Edison CO.



SURVEYS

- A-28 RESURVEYED BY J. B. NICHOLS APRIL 28, 1950. (SEE SURVEY MAP FOR PERMANENT BOUNDARY LINES OF EDGEWATER PLANT BY NICHOLS & LOGG SQUARES. SURV. DTD. MAR. 3, 1937.)
- A-43 SURVEY OF WILLIS PROPERTY BY J. W. WARREN, SURV. DTD. MAR. 28, 1917.
- A-44 SURVEY BY J. B. NICHOLS, SURV. DTD. FEB. 1, 1980.
- SEE LORAIN CO. AER-O-PLAT ATLAS FOR PERMANENT PARCEL NUMBERING SYSTEM, PG. 2-02-028-A & 2-01-005-A, BLACK RIVER TWP.
- A-1 0.163 AC (LOT 707)
- A-2 2.000 AC (LOT 711)
- A-3 0.640 AC
- A-4 1.900 AC
- A-5 0.070 AC
- A-6 0.235 AC
- A-7 0.170 AC
- A-8 0.114 AC
- A-9 0.142 AC
- A-10 0.142 AC
- A-11 0.110 AC
- A-12 0.150 AC
- A-13 0.150 AC
- A-14 0.150 AC
- A-15 0.150 AC
- A-16 0.150 AC
- A-17 0.150 AC
- A-18 0.150 AC
- A-19 0.150 AC
- A-20 0.150 AC
- A-21 0.150 AC
- A-22 0.150 AC
- A-23 0.150 AC
- A-24 0.150 AC
- A-25 0.150 AC
- A-26 0.150 AC
- A-27 0.150 AC
- A-28 0.150 AC
- A-29 0.150 AC
- A-30 0.150 AC
- A-31 0.150 AC
- A-32 0.150 AC
- A-33 0.150 AC
- A-34 0.150 AC
- A-35 0.150 AC
- A-36 0.150 AC
- A-37 0.150 AC
- A-38 0.150 AC
- A-39 0.150 AC
- A-40 0.150 AC
- A-41 0.150 AC
- A-42 0.150 AC
- A-43 0.150 AC
- A-44 0.150 AC
- A-45 0.150 AC
- A-46 0.150 AC
- A-47 0.150 AC
- A-48 0.150 AC
- A-49 0.150 AC
- A-50 0.150 AC
- A-51 0.150 AC
- A-52 0.150 AC
- A-53 0.150 AC
- A-54 0.150 AC
- A-55 0.150 AC
- A-56 0.150 AC
- A-57 0.150 AC
- A-58 0.150 AC
- A-59 0.150 AC
- A-60 0.150 AC
- A-61 0.150 AC
- A-62 0.150 AC
- A-63 0.150 AC
- A-64 0.150 AC
- A-65 0.150 AC
- A-66 0.150 AC
- A-67 0.150 AC
- A-68 0.150 AC
- A-69 0.150 AC
- A-70 0.150 AC
- A-71 0.150 AC
- A-72 0.150 AC
- A-73 0.150 AC
- A-74 0.150 AC
- A-75 0.150 AC
- A-76 0.150 AC
- A-77 0.150 AC
- A-78 0.150 AC
- A-79 0.150 AC
- A-80 0.150 AC
- A-81 0.150 AC
- A-82 0.150 AC
- A-83 0.150 AC
- A-84 0.150 AC
- A-85 0.150 AC
- A-86 0.150 AC
- A-87 0.150 AC
- A-88 0.150 AC
- A-89 0.150 AC
- A-90 0.150 AC
- A-91 0.150 AC
- A-92 0.150 AC
- A-93 0.150 AC
- A-94 0.150 AC
- A-95 0.150 AC
- A-96 0.150 AC
- A-97 0.150 AC
- A-98 0.150 AC
- A-99 0.150 AC
- A-100 0.150 AC
- TOTAL 5.314 AC

THIS DWG. SUPERSEDES DWG. 47-010/1/3
DTD. JAN. 15, 1987, REV. JULY 7, 1984.

NOTE: THE CRYSTAL ICE CO. - THE R.E. IMPROVEMENT CO., W.D. JAN. 7, 1928, VOL. 219, PG. 229, L.C.D.R. ASSENT FOR PERPETUAL USE OF SPUR TRACK BY THE CRYSTAL ICE CO. & O.R.S. CO. THE R.E. IMPROVEMENT - THE CITY OF LORAIN, W.D. APR. 6, 1928, VOL. 217, PG. 949, L.C.D.R.

C. L. & W. RY CO. TO THE VILLAGE OF LORAIN, W.D., OCT. 8, 1895, VOL. 74, PG. 400, L.C.D.R. (EXCEPTING STRIP OF LAND UPON WHICH R.R. TRACK OF GRANTOR IS LOCATED) SEE DWG. 47-010, SH 2 OF 3 FOR SPUR TRACK.

THE LORAIN CRYSTAL ICE CO. & THE O.R.S. CO. AGMT. DTD. NOV. 30, 1948, VOL. 484, PG. 63 TO 70.

CITY OF LORAIN TO THE CRYSTAL ICE CO. DEC. 31, 1923 - LEASE - VOL. 23, PG. 408. CITY OF LORAIN TO THE O.R.S. CO. OCT. 6, 1923 - LEASE - VOL. 32, PG. 45 (50 YR. LEASE) (1944 AC. 8.19 AC.) THE O.R.S. CO. & THE LORAIN CRYSTAL ICE CO. AGMT. DTD. NOV. 24, 1953.

TRACT 1, PT. LOT 6
TOTAL LEASE AREA
12,632 AC.

CITY OF LORAIN
TRACT 2, N. PT. LOT 26

THIS DWG. SUPERSEDES DWG. 47-010/1/3 DTD 8-3-1984 REV.

OCT. 14, 1971 DRB
DEC. 9, 1971 WJA (REV.)
OCT. 17, 1980 HIC (REV.) CK/KMM

GENERAL DIVISION

47:010 (1)